

D I F F E R E N C E
I N S O U N D Q U A L I T Y

Astell&Kern



SOUNDS, INFINITE POSSIBILITIES

Astell&Kern is a premium audio brand of portable and non-portable audio systems that play hi-res audio files without compromise. Astell means "star" in Greek, and Kern means "core" in German. Together, they refer to our aim to continuously reach for the core of music — the "original sound."



WE USE THE POWER OF MUSIC TO ENHANCE YOUR LIFE

Astell&Kern hopes to touch people's hearts and restore their vitality by delivering music that is authentic to the original sound when it was recorded or performed. Astell&Kern is passionate about music and desire constant innovation.



AK ULTIMATE SOUND SOLUTION, TERATON ALPHA

TERATON ALPHA is AK's Ultimate Sound Solution to produce audio playback that is close to the original sound through the use of effective power noise removal, efficient power consumption and amplification without compromise through the audio output interface.

What makes Astell&Kern sound different? Many people have similar ideas about sound. They assume "It is the DAC that determines the sound in the DAP, and in the end, if you use the same DAC, the sound will be similar for each product."

The DAC does play a large part of the sound signature in a DAP, but it's not the only factor that determines the level of sound.



Audio Power Part



Amplifier Part



Audio Interface Part

TERATON ALPHA features Astell&Kern's patented technologies, which are the result of tens of thousands of hours of continuous research and development to produce sound close to the original sound the artist and producer intended.



A&ultima SP2000T

DIGITAL AUDIO PLAYER



- **The Triple Amp System Takes Acoustics to a New Level**
- **Vacuum Tube Amplifier Compatible with 2.5 mm, 3.5 mm and 4.4 mm Output Jacks**
- **Equipped with ESS ES9068AS Quad-DAC**
- **TERATON ALPHA, Astell&Kern's Ultimate Sound Solution**
- **Internal Mechanical Design to Minimize Noise**

Price : \$ 2,400



Triple AMP System



ESS ES9068AS Quad-DAC

TERATON α

TERATON ALPHA



LDAC aptX™-HD



Full HD Display



MQA



BT Sink



Dual band Wi-Fi
2.4, 5GHz

SPECIFICATIONS

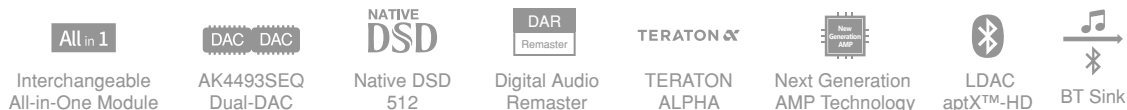
Body	Aluminum (Onyx Black)
Dimensions/Weight	3.07 "(78.1 mm) [W] x 5.55 "(141.1 mm) [H] x 0.68 "(17.5 mm) [D] / about 10.89 oz (309g)
Display	5.0inch 1920 x 1080 FHD Touch screen
Supported Audio Formats	WAV, FLAC, WMA, MP3, OGG, APE, AAC, ALAC, AIFF, DFF, DSF, MQA
Sample rate	PCM : 8kHz ~ 384kHz (8/16/24/32bits per Sample) / DSD Native: DSD64(1bit 2.8MHz) Stereo / DSD128(1bit 5.6MHz), Stereo / DSD256(1bit 11.2MHz), Stereo / DSD512(1bit 22.4MHz), Stereo
Decoding	Support up to 32bit / 384Hz Bit-to-Bit Playback
Output Level	Unbalanced 3Vrms / Balanced 6Vrms (Condition No Load)
DAC	ESS ES9068AS x4 (Quad-DAC)
Input	USB Type-C input (for charging & PC & MAC)
Outputs	Unbalanced Out (3.5mm) / Optical Out (3.5mm) / Balanced Out (2.5mm, only 4-pole supported) / 4.4mm, only 5-pole supported)
Wi-Fi	802.11 a/b/g/n/ac (2.4/5GHz)
Bluetooth	V5.0 (A2DP, AVRCP, Qualcomm® aptX™ HD, LDAC)
Playback Time	About 9hours (Standard : FLAC, 16bit, 44.1kHz, Unbalanced Volume 50, LCD Off, LED On, OP AMP Mode)
Memory	256GB [NAND], microSD x1 (Max. 1TB)





- **Interchangeable All-in-One Module**
- **TERATON ALPHA, Astell&Kern's Ultimate Sound Solution**
- **Next Generation AMP Technology**
- **Updated UI with Added Functions for Convenience**
- **SEM4 - AKM AK4493SEQ Dual DAC**
- **SEM4 - Digital Audio Remaster (DAR) technology**

SE180 : \$ 1,499 / SEM4 : \$ 400



SPECIFICATIONS

Body	Aluminum (Moon Silver)
Dimensions/Weight	3.03 "(77 mm) [W] x 5.09 "(129.2 mm) [H] x 0.78 "(19.9 mm) [D] (Only body) / 9.88 oz (280g)
Display	5.0inch 1920x1080 FHD Touch screen
Supported Audio Formats	WAV, FLAC, WMA, MP3, OGG, APE, AAC, ALAC, AIFF, DFF, DSF, MQA
Sample rate (SEM4)	PCM : 8kHz ~ 768kHz (8/16/24/32bits per Sample) / DSD Native: DSD64(1bit 2.8MHz), Stereo / DSD128(1bit 5.6MHz), Stereo / DSD256(1bit 11.2MHz), Stereo / DSD512(1bit 22.4MHz), Stereo / Digital Audio Remaster (DAR) Max PCM rate 384 kHz/DSD256
Decoding (SEM4)	Support up to 32-bit / 768kHz Bit-to-Bit Playback
Output Level (SEM4)	[Normal Gain] Unbalanced 2Vrms / Balanced 4Vrms (Condition No Load) [High Gain] Unbalanced 3Vrms / Balanced 6Vrms (Condition No Load)
DAC (SEM4)	AKM AK4493SEQ x2 (Dual DAC)
Input	USB Type-C input (for charging & PC & MAC)
Outputs	Unbalanced Out (3.5mm) / Balanced Out (2.5mm, only 4-pole supported / 4.4mm, only 5-pole supported)
Wi-Fi	802.11 b/g/n (2.4GHz)
Bluetooth	V5.0 (A2DP, AVRCP, Qualcomm® aptX™ HD, LDAC)
Playback Time	about 14hours (Standard : FLAC, 16bit, 44.1kHz, Unbalanced, Vol.50, LCD Off)
Memory	256GB [NAND], microSD x1 (Max. 1TB)





- 4-step gain level with maximum 15Vrms output
- Perfect circuit design (High output and low noise)
- Equipped with ESS ES9038Q2M Quad-DAC
- TERATON ALPHA, Astell&Kern's Ultimate Sound Solution
- 32-bit/768kHz, Native DSD512 support

Price : \$ 1,300



Powerful Output 15Vrms



ES9038Q2M Quad-DAC



Native DSD 512



TERATON ALPHA



32bit 768kHz Bit To Bit Play



MQA 8X



LED Indicator



BT Sink

SPECIFICATIONS

Body	Aluminum (Anthracite Gray)
Dimensions/Weight	2.68"(68.3mm)[W] x 4.6"(117mm)[H] x 0.92"(23.6mm)[D] / about 10.76oz (305g)
Display	4.1inch HD 720 x 1280 Touch screen
Supported Audio Formats	WAV, FLAC, WMA, MP3, OGG, APE, AAC, ALAC, AIFF, DFF, DSF
Sample rate	PCM : 8kHz ~ 768kHz (8/16/24/32bits per Sample) DSD Native: DSD64(1bit 2.8MHz), Stereo / DSD128(1bit 5.6MHz), Stereo / DSD256(1bit 11.2MHz), DSD512(1bit, 22.4MHz) Stereo
Decoding	Support up to 32-bit / 768kHz Bit-to-Bit Playback
Output Level	[Low] Unbalanced 2Vrms / Balanced 4Vrms (Condition No Load), [Mid] Unbalanced 4Vrms / Balanced 8Vrms (Condition No Load), [High] Unbalanced 6Vrms / Balanced 12Vrms (Condition No Load), [Super] Unbalanced 8Vrms / Balanced 15Vrms (Condition No Load)
DAC	ESS ES9038Q2M x4 (Quad-DAC)
Input	USB Type-C input (for charging & PC & MAC)
Outputs	Unbalanced Out (3.5mm), Optical Out (3.5mm) / Balanced Out (2.5mm, only 4-pole supported / 4.4mm, only 5-pole supported)
Wi-Fi	802.11 b/g/n (2.4GHz)
Bluetooth	V5.0 (A2DP, AVRCP, Qualcomm® aptX™ HD, LDAC)
Playback Time	about 13hours (Standard: FLAC, 16bit, 44.1kHz, Unbalanced, Vol.40, LCD Off, LED On, Low Gain)
Memory	64GB [NAND], microSD x1 (Max. 1TB)





- Improved audio quality compared to the SR25
- Multiple Output (2.5mm, 3.5mm and 4.4mm)
- 20 hours of continuous playback
- Supports two-way Bluetooth and high-definition codecs (Qualcomm® aptX™ HD, LDAC)
- ReplayGain automatically maintains constant volume

Price : \$ 750



CS43198
Dual-DAC



Quad-Core
CPU



2.5mm, 4.4mm
Balanced Output



20hrs
Playback



MQA 8X



LDAC
aptX™ HD



ReplayGain



BT Sink

SPECIFICATIONS

Body	Aluminum (Mercury D. Sliver)
Dimensions/Weight	2.5 "(63.5 mm) [W] x 4.26 "(108.3 mm) [H] x 0.63 "(16.1 mm) [D] / about 6.27 oz (about 178 g)
Display	3.6inch HD 720 x 1280 TFT LCD
Supported Audio Formats	WAV, FLAC, WMA, MP3, OGG, APE, AAC, ALAC, AIFF, DFF, DSF, MQA
Sample rate	PCM : 8kHz ~ 384kHz (8/16/24/32bits per Sample) / DSD Native: DSD64(1bit 2.8MHz), Stereo / DSD128(1bit 5.6MHz), Stereo / DSD256(1bit 11.2MHz), Stereo
Decoding	Support up to 32bit / 384kHz Bit-to-Bit Playback
Output Level	Unbalanced 2Vrms / Balanced 4Vrms (Condition No Load)
DAC	Cirrus Logic CS43198 x2 (Dual DAC)
Input	USB Type-C input (for charging & PC & MAC)
Outputs	Unbalanced Out (3.5mm) / Balanced Out (2.5mm, only 4-pole supported / 4.4mm, only 5-pole supported)
Wi-Fi	802.11 b/g/n (2.4GHz)
Bluetooth	V4.2 (A2DP, AVRCP, Qualcomm®aptX™ HD, LDAC)
Playback Time	about 20hours (Standard : FLAC, 16bit, 44.1kHz, Unbalanced, Vol.50, EQ Off, LCD Off)
Memory	64GB [NAND], microSD x1 (Max. 1TB)



AK UW100

EARPHONE



- High Performance 32bit DAC
- Best-in-Class Passive Noise Isolation (PNI)
- Knowles BA Driver
- aptX™ Adaptive for High Quality Wireless Audio
- Ambient Mode
- Premium Tier QCC5141 & Bluetooth 5.2
- All Day Music (Total 24hrs playback)
- Supports Wireless Charge and Fast Charge

Price : \$ 260


High
32bit DAC


Knowles
BA Driver


Top Level
PNI


Ambient
Mode


aptX™
Adaptive


Bluetooth
5.2


24hrs
Playback

SPECIFICATIONS

Dimensions	Earbud : 22.2 x 21.2 x 22.8(mm) / Cradle : 76.8 x 41.0 x 34.12(mm)
Weight	Earbuds : approx. 7g / Charging Case : approx. 65g
BT Chipset	Qualcomm 5141
Driver Unit	Knowles Balanced Armature
DAC	AKM AK4332ECB
Bluetooth	V5.2 (SBC, AAC, aptX™ Adaptive, HFP, A2DP, AVRCP)
Sound Pressure Level(SPL)	94dB (1m@1kHz)
Earbud Control	Capacitive Touch
Sensor	Proximity Sensor
Microphone	2-mic (per earbud)
Playback Time	6hours (Total 24hours)
USB	C Type for charging
Cradle	Supports Wireless Charging
Control APP	Android and iOS version
Firmware Upgrade	OTA(Over The Air)





- **Three Different Types of Drivers**
- **Perfectly Harmonized Driver Structure**
- **Highest Cross-Over Network Management**
- **Acoustic Chamber created using 3D Printed Technology**
- **Precise CNC Machined Metal Housing**
- **Hi-Fi Grade Pure Silver-Coated OFC Cable**
- **Hand Crafted in Japan**

ZERO1 : \$ 699 / PEP11(4.4mm) : \$ 130

SPECIFICATIONS

Drivers	Hybrid Drivers [Special Micro Rectangular Planar Dynamic Driver x1] [Custom Balanced Armature Driver x2] [5.6mm Micro Dynamic Driver x1]
Cable	3.5mm MMCX Hi-Fi Grade Pure Silver-Coated OFC Cable PEP11 - 4.4mm MMCX Hi-Fi Grade Pure Silver-Coated OFC Cable (Optional)
Housing Material	Aluminum
Frequency Response	25Hz–30kHz
SPL	96dB@1kHz (1mW)
Impedance	16Ohm@1kHz
Total Harmonic Distortion	0.7%@1kHz





- All new Dual Chamber BA with Custom dual balanced armature tweeter and twin dynamic woofers
- All new Radial Venting Technology 3D printed acoustic chamber design
- Precision milled aluminum shell with anodized finish
- Beryllium / copper MMCX connections
- Silver Plated High Purity Copper Cable (2.5mm, 3.5mm, 4.4mm)
- Hand crafted IEM, made in USA

Price : \$ 1,900

SPECIFICATIONS

Transducer type	[High] Custom Dual Balanced Armature Drivers + T.A.E.C. [Mid] All-New 'Dual Chamber' Balanced Armature Driver Technology from Knowles [Mid-Low to Sub-Bass] All-New Dual Custom 10mm Dynamic Drivers paired with Radial Venting Technology
Cable	Silver Plated High Purity Copper Cable (2.5mm, 3.5mm, 4.4mm)
Material/ Design	Machined aluminum shell with "Night Sky" black anodized finish Hand polished stainless steel threaded sprout Stainless steel "Mountain Peak" design
Frequency response	5Hz-20kHz
SPL	94dB@1kHz : 13.49mVrms
Impedance	6.2Ohm@1kHz
Total harmonic distortion	Less than 1%



ACRO CA1000

HOME AUDIO-AMPLIFIER



- 4-step gain level with maximum 15Vrms output
- Maximum options - Multiple inputs and outputs
- Equipped with ESS ES9068AS Quad-DAC
- Support for 32bit/384kHz PCM and Native DSD512
- Next Generation Astell&Kern AMP Technology
- Crossfeed support for a more natural acoustic experience

Price : \$ 2,100


Powerful
Output 15Vrms


ESS ES9068AS
Quad-DAC


Native DSD
512


TERATON
ALPHA


Powerful
Connections


Crossfeed


MQA 8X


LDAC
aptX™-HD

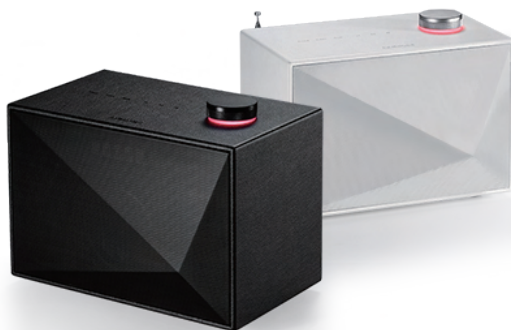
SPECIFICATIONS

Body / Display	Aluminum (Moon Silver) / 4.1 inch 720 x 1280 Touch screen
Dimensions/Weight	4.12"(104.9mm)[W] x 1.77"(45mm)[H] x 5.85"(148.8mm)[D] / about 32.41oz (919g)
Supported Audio Formats	WAV, FLAC, WMA, MP3, OGG, APE, AAC, ALAC, AIFF, DFF, DSF, MQA
Sample rate	PCM : 8kHz ~ 384kHz (8/16/24/32bits per Sample) / DSD Native: DSD64(1bit 2.8MHz), Stereo / DSD128(1bit 5.6MHz), Stereo / DSD256(1bit 11.2MHz), DSD512(1bit, 22.4MHz) Stereo
Decoding	Support up to 32bit / 384kHz Bit-to-Bit Playback
Output Level	[Low] Unbalanced 2Vrms / Balanced 4Vrms (Condition No Load), [Mid] Unbalanced 4Vrms / Balanced 8Vrms (Condition No Load), [High] Unbalanced 6Vrms / Balanced 12Vrms (Condition No Load), [Super] Unbalanced 8Vrms / Balanced 15Vrms (Condition No Load) [RCA] 2Vrms (Condition No Load)
DAC	ESS ES9068AS x4 (Quad-DAC)
Inputs / Outputs	Unbalanced (3.5mm, 6.35mm) / Balanced (2.5mm, 4.4mm) RCA (Stereo pair) x1 in, RCA (Stereo pair) x1 out Coaxial x1, Optical x1, USB(Type-C) x1, Optical(3.5mm) x1, USB(Type-C) x1
Wi-Fi / Bluetooth	802.11 a/b/g/n/ac (2.4/5GHz) / V5.0 (A2DP, AVRCP, Qualcomm® aptX™ HD, LDAC)
Playback Time	about 10.5 hours (Standard : FLAC, 16bit, 44.1kHz, Unbalanced, Vol.40, LCD Off, Low Gain)
Memory	256GB [NAND], microSD x1 (Max. 1TB)



ACRO BE100

HOME AUDIO-SPEAKER



- Real Hi-Fi sound - 32-bit Hi-Fi DAC
- Custom 4" Kevlar woofer, 1.5" silk dome tweeter
- High-End Class-D AMP, powerful 55W output
- Independent Treble and Bass adjustments
- The world's first Bluetooth speaker that supports both aptX™ HD and LDAC codecs
- Unique light and shadow effect design

Price : \$ 380 (NON-FM VERSION)



32-bit
Hi-Fi DAC



LDAC
aptX™-HD



4" woofer
1.5" tweeter x2



Treble&Bass
control

SPECIFICATIONS

Woofer Unit	4inch x 1
Twitter Unit	1.5inch x 2
Amplifier Output	55W(25W x 1 + 15W x 2)
Frequency Response	50 ~ 20kHz
Maximum Sound Level	94dB SPL @1m
Bluetooth Version	V5.0 (SBC, AAC, aptX™ HD, LDAC)
Indicators	14 segment
Power Input	19V/3,43A
AUX	3.5mm Stereo
Dimensions	261 x 164 x 171(mm)
Weight	about 3.2kg



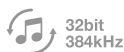


- Supports 4.4mm balanced output
- Powerful 4Vrms output
- For true Hi-Fi sound, CS43198 Dual DAC
- Dual Shielded Cable
- Full aluminum refined material
- Compatible with iOS devices
- Detailed volume control by an Android app

Price : \$ 170



CS43198
Dual DAC



Bit To Bit Play



Native DSD



Full Metal
Body



On/Off
LED Indicator



Powerful
Output Level



Dual Noise
Shielded Cable

SPECIFICATIONS

DAC	Cirrus Logic CS43198 Dual
Bit / Sample rate	PCM 32bit/384kHz, Native DSD256
Output Level	4Vrms
Audio Output	4.4mm Balanced
USB Type	C type
LED	Power on/off indicator
Material	Aluminum
Weight	about 29g
Dimensions(WHD)	USB Plug : 12 x 21 x 6.5mm 4.4mm Headphone : 22.8 x 60 x 12.1mm
Frequency Response	0.011dB (Condition : 20Hz~20kHz) Balanced 0.145dB (Condition : 20Hz~70kHz) Balanced
Signal to Noise Ratio	122dB @ 1kHz, Balanced
Crosstalk	-146dB @ 1kHz, Balanced
THD+N	0.0004% @ 1kHz, Balanced
IMD SMPTE	0.0003%, 800Hz 10kHz (4:1), Balanced
Output Impedance	4.4mm (1.5ohm)



Astell&Kern

www.astellkern.com

Instagram: [@astellkern.official](https://www.instagram.com/astellkern.official)

Facebook: [@astellkern](https://www.facebook.com/astellkern)

E-mail: astellkern@astellkern.com